



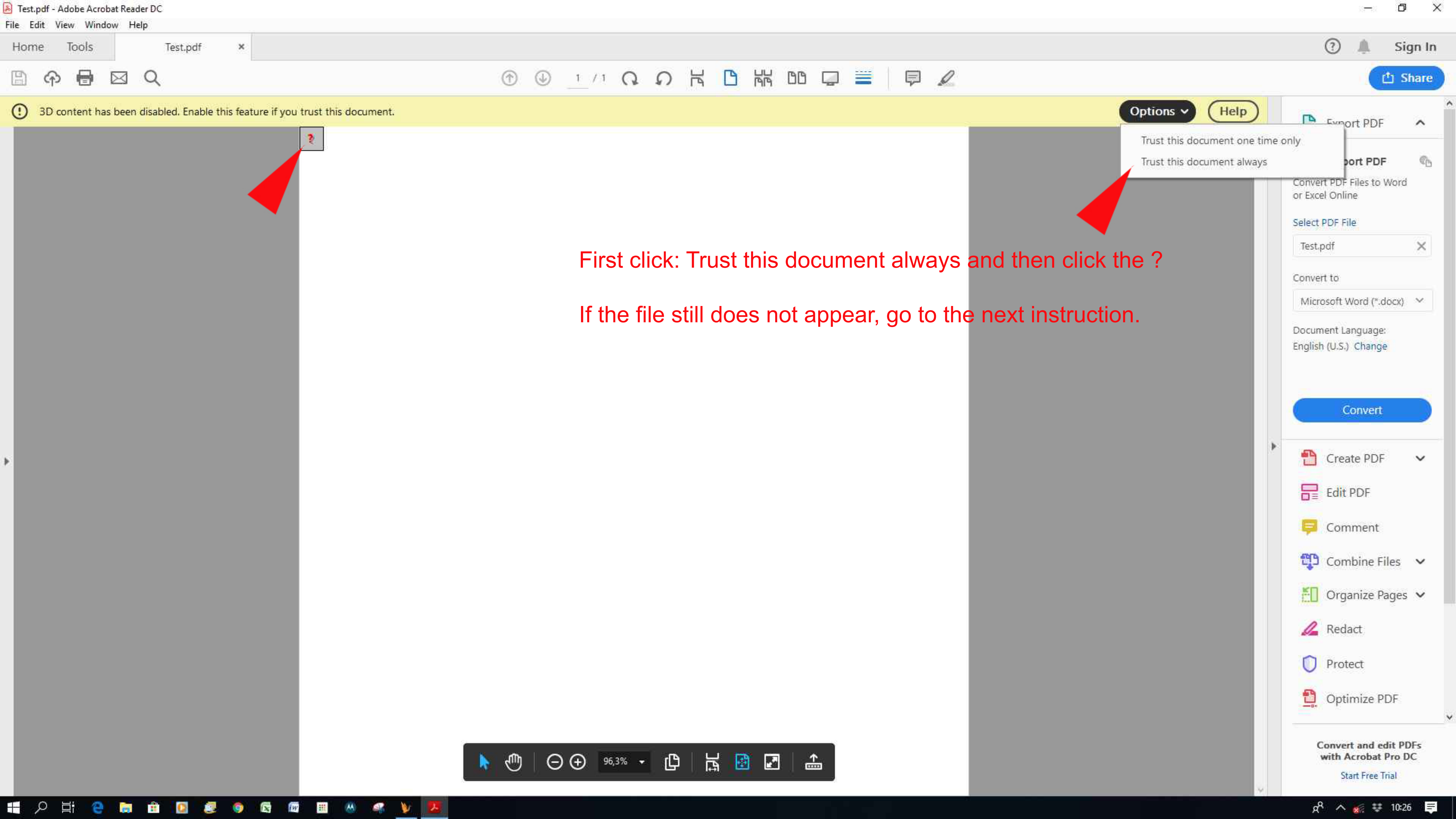
Normally, 3D files are disabled!



So, click here first

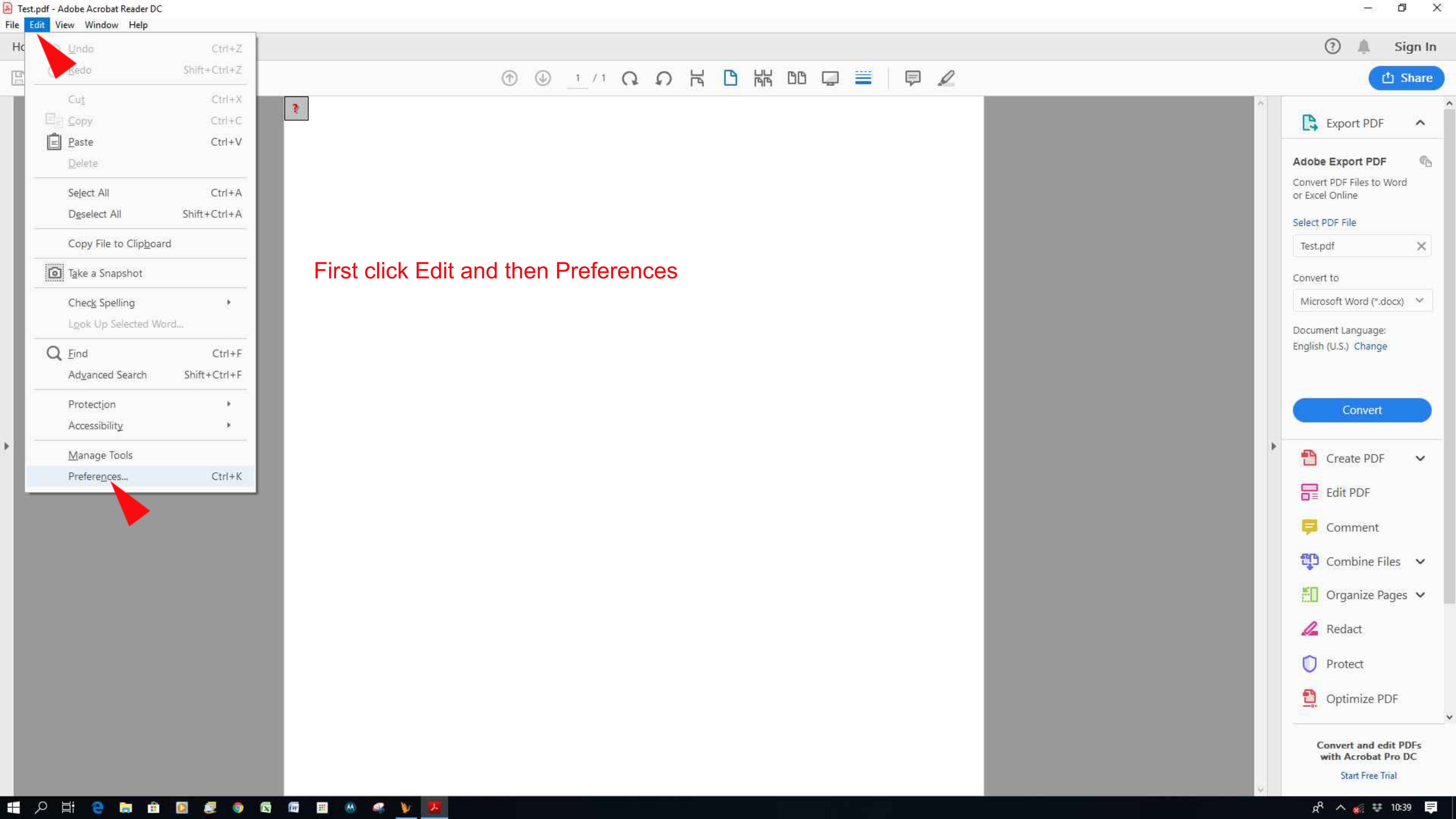
When you open the 3D file, you probably see this screen.

If you don't see the yellow bar, then continue at page 3



First click: Trust this document always and then click the ?

If the file still does not appear, go to the next instruction.



First click Edit and then Preferences

Export PDF

Adobe Export PDF

Convert PDF Files to Word or Excel Online

Select PDF File

Test.pdf

Convert to

Microsoft Word (*.docx)

Document Language: English (U.S.) Change

Convert

Create PDF

Edit PDF

Comment

Combine Files

Organize Pages

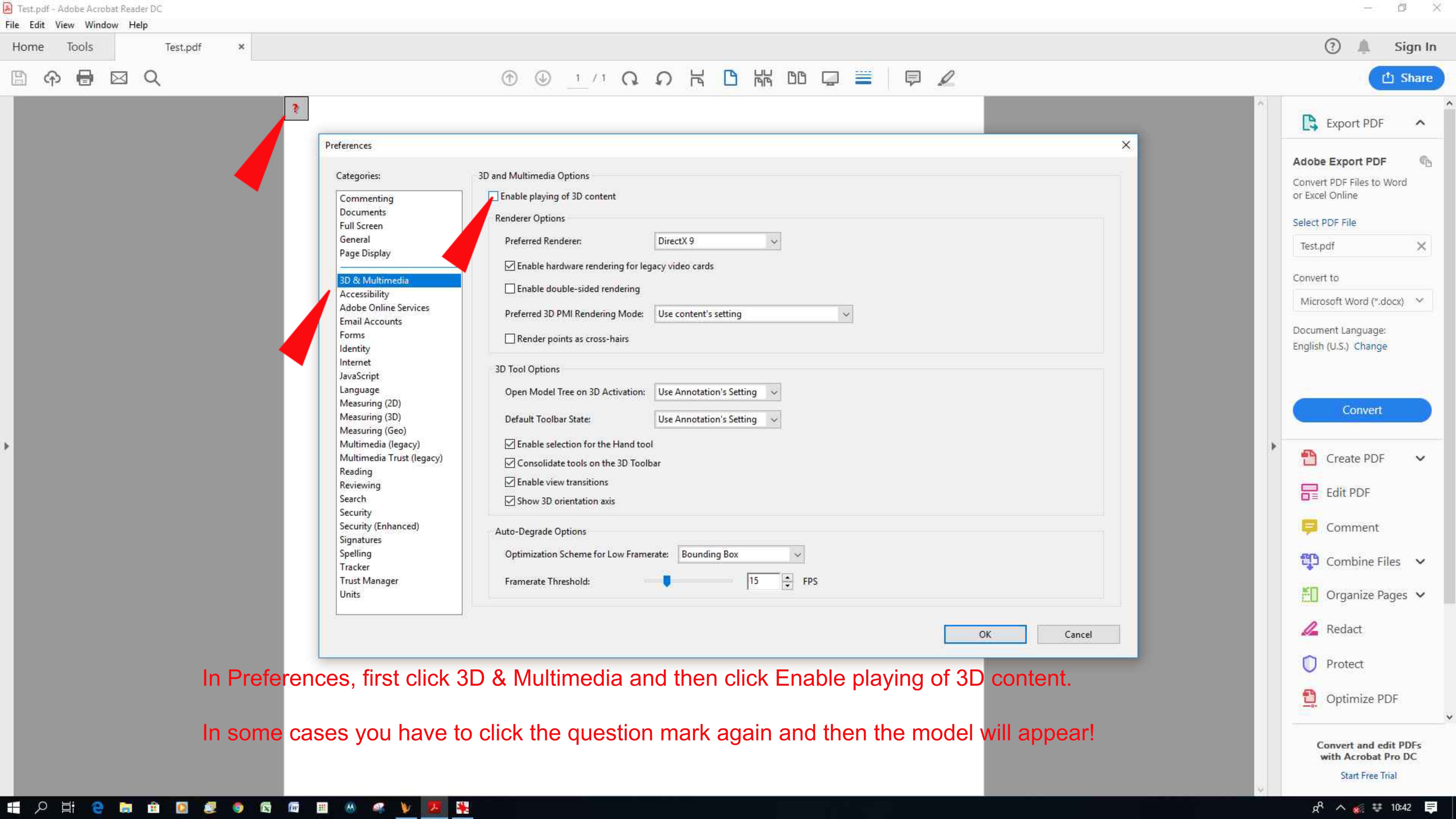
Redact

Protect

Optimize PDF

Convert and edit PDFs with Acrobat Pro DC

Start Free Trial



Test.pdf - Adobe Acrobat Reader DC

File Edit View Window Help

Home Tools Test.pdf x

Export PDF

Adobe Export PDF

Convert PDF Files to Word or Excel Online

Select PDF File

Test.pdf

Convert to

Microsoft Word (*.docx)

Document Language: English (U.S.) Change

Convert

Create PDF

Edit PDF

Comment

Combine Files

Organize Pages

Redact

Protect

Optimize PDF

Convert and edit PDFs with Acrobat Pro DC

Start Free Trial

1 / 1

Preferences

Categories:

- Commenting
- Documents
- Full Screen
- General
- Page Display
- 3D & Multimedia**
- Accessibility
- Adobe Online Services
- Email Accounts
- Forms
- Identity
- Internet
- JavaScript
- Language
- Measuring (2D)
- Measuring (3D)
- Measuring (Geo)
- Multimedia (legacy)
- Multimedia Trust (legacy)
- Reading
- Reviewing
- Search
- Security
- Security (Enhanced)
- Signatures
- Spelling
- Tracker
- Trust Manager
- Units

3D and Multimedia Options

Enable playing of 3D content

Renderer Options

Preferred Renderer: DirectX 9

Enable hardware rendering for legacy video cards

Enable double-sided rendering

Preferred 3D PMI Rendering Mode: Use content's setting

Render points as cross-hairs

3D Tool Options

Open Model Tree on 3D Activation: Use Annotation's Setting

Default Toolbar State: Use Annotation's Setting

Enable selection for the Hand tool

Consolidate tools on the 3D Toolbar

Enable view transitions

Show 3D orientation axis

Auto-Degrade Options

Optimization Scheme for Low Framerate: Bounding Box

Framerate Threshold: 15 FPS

OK Cancel

In Preferences, first click 3D & Multimedia and then click Enable playing of 3D content.

In some cases you have to click the question mark again and then the model will appear!